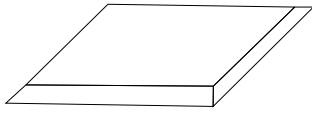
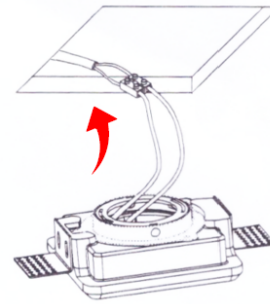


1



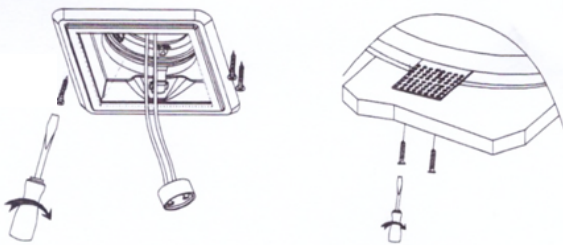
Faça o nicho de acordo com as medidas.  
Nicho: 123 X 123 MM.

2



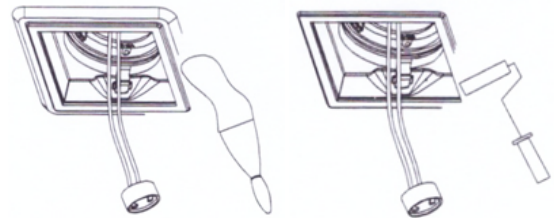
Através do furo, realize a ligação elétrica necessária.

3



Coloque a moldura da peça dentro do nicho e fixe a moldura utilizando os parafusos;

4



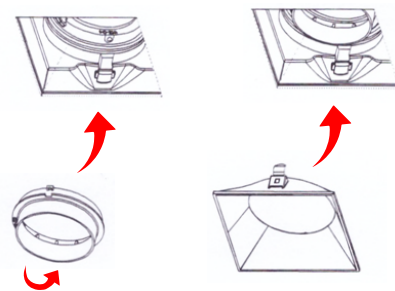
Realize o acabamento com gesso, espere secar, em seguida faça o acabamento de pintura;

5

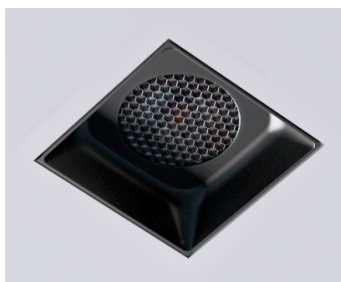


Encaixe a lâmpada no soquete. Utilize a peça de metal para fixar a lâmpada na moldura.

6



Encaixe as seguintes peças, como ilustrado.



Peça instalada.